



Only available to new and existing professional WarmlyYours customers.

Speak to your account manager for information about ordering along with pro and volume discounts.

# TempZone™ Floor Heating Ruler Cable

The TempZone Floor Heating Ruler Cable is the first electric radiant heating cable to feature easy-to-read hash marks at every half-inch, inch, and foot increment. This innovative design ensures the installer is using the proper amount of cable while they're laying it out for a smooth installation and even heating for the end user.

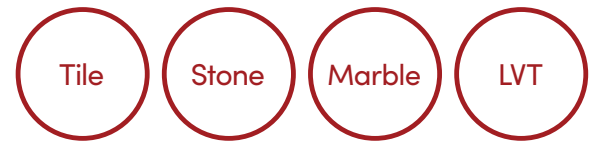
The TempZone Floor Heating Ruler Cable can be installed in two different ways: with GripStrip™ fixing strips or with an uncoupling membrane like the Prodeso Membrane. The GripStrips are complimentary and are the most economical option for installation. Using an uncoupling membrane provides benefits like speed of installation and crack isolation.



## Product Information

Heating Cable	Loose cable that can be installed with either GripStrips or an uncoupling membrane like the Prodeso Membrane.
Heating Element Color	Yellow with Black Markings
Heating Element Insulation	ETFE (Fluoropolymer)
Heating Cable Outer Insulation	High-temperature PVC
Heating Output	3.7 watts per linear foot and between 9-15 watts per sq. ft. (depending on spacing)
Certifications	UL listed for wet locations like shower floors and benches
Warranty	25-year No Nonsense™ Warranty

## Installs Under:



## Dimensions

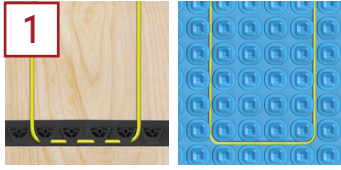
Sizes	Available in cable lengths ranging from 30' to 864'
Heating Element Thickness	0.17" (4.3mm)
Cold Lead Information	<ul style="list-style-type: none"> <li>Length: 12</li> <li>18 AWG for cables of 10 amps or less</li> <li>16 AWG for cables over 10 amps</li> <li>Construction: 2 Conductor x 18-16 AWG - ETFE insulated + drain wire, overall Mylar + PVC sheathed</li> </ul>
Factory Splice Max Thickness	0.41" (10.5mm)

## Electrical

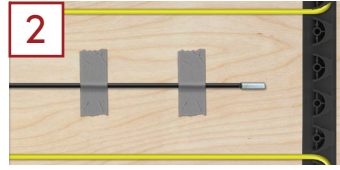
- TempZone Floor Heating Ruler Cables have no polarity.
- WarmlyYours controls are equipped with ground fault circuit interrupter (G.F.C.I.) protection.

Voltage	Available in 120V, 240V
Cold Lead Wire Colors	<ul style="list-style-type: none"> <li>120V: Yellow &amp; black with black outer sheath</li> <li>240V: Red &amp; black with black outer sheath</li> </ul>

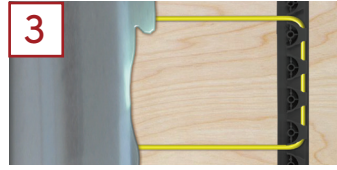
## 4 Simple Steps to Install



Layout TempZone Floor Heating Ruler Cable with GripStrips or the Prodeso Membrane



Secure the Included Floor Sensor



Apply Thinset or SLC (3/5" thick minimum)



Install Flooring

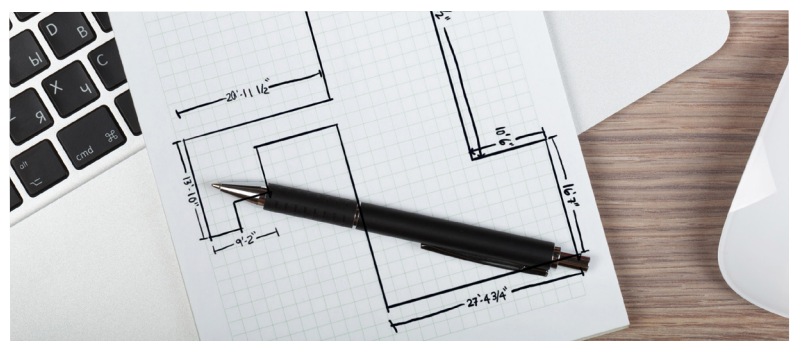
## Installation Information

- Heating element should be embedded within a minimum 3/8" thick layer of modified thinset or self-leveling underlayment.
- Heating cable should be installed within 1" to 1.5" from the top of the flooring surface.
- Multiple heating cables can be wired to a control, as long as they total less than 15 amps (the limit of the controller).
- Multiple heating cables are never wired to each other in series (parallel wiring required). The non-heating leads from each heating cable need to hook up to the controller and be wired in parallel.
- Do not install under permanent fixtures.
- Do not install within 4" of the toilet wax ring.
- Entire heating section and splices need to be embedded in thinset or self-leveling underlayment to prevent overheating and premature failure.
- Do not shorten the heating cable. Do NOT cut the heating cable. Only the non-heating cold leads can be shortened.
- Do not run a power lead or sensor wire across a warming cable.

- Do not fold or position the heating cable so that it overlaps itself or other warming cables (this could lead to dangerous overheating).
- Do not connect the heating cable to the power supply for testing before it is embedded (this could lead to dangerous overheating). Testing is only done with a digital ohm meter.
- Cable spacing (ranging from 3" at a minimum to 5" at a maximum) will impact how many square feet of heating coverage can be installed on a single circuit. For a 120V circuit, heating coverage would range from 120 to 200 sq. ft. For a 240V circuit, this range would be from 240 to 400 sq. ft.
- TempZone Floor Heating Ruler Cable should be installed with a floor sensor. Each roll of the cable should come with a complimentary floor sensor. Additionally, WarmlyYours nSpiration Series thermostats come with a floor sensor too.

## How to Order

- 1 Simply draw a floor plan sketch of your project (including dimensions) and let us know if you have a preference between GripStrips and Prodeso.
- 2 Send it to [sales@warmlyyours.com](mailto:sales@warmlyyours.com). Then WarmlyYours's skilled engineers will create a free SmartPlan™ custom installation plan based on your drawing, typically in as little as 1 business day.
- 3 After you receive your SmartPlan™, just verify the correct dimensions before placing your order with your WarmlyYours account manager.



## 120 Volt TempZone™ Floor Heating Ruler Cables

SKU	Cable Length in Feet	Coverage in Sq. Ft.				WATTS	AMPS	MSRP
		3" Spacing	3.75" Spacing	4" Spacing (Recommended)	5" Spacing			
		GripStrips	Prodeso Membrane	GripStrips	Both Strips and Membrane			
RCT-120-0030	30	7.5	9.3	9.9	12.5	111	1.0	\$139
RCT-120-0040	40	10.0	12.5	13.3	16.6	148	1.3	\$179
RCT-120-0050	50	12.5	15.6	16.6	20.8	185	1.6	\$199
RCT-120-0070	70	17.5	21.8	23.3	29.1	259	2.2	\$239
RCT-120-0090	90	22.5	28.1	29.9	37.5	333	2.8	\$289
RCT-120-0120	120	30.0	37.5	39.9	50.0	444	3.7	\$339
RCT-120-0150	150	37.5	46.8	49.9	62.5	555	4.7	\$399
RCT-120-0180	180	45.0	56.2	59.9	75.0	666	5.6	\$449
RCT-120-0220	220	55.0	68.7	73.3	91.6	814	6.8	\$509
RCT-120-0260	260	65.0	81.2	86.6	108.3	962	8.1	\$559
RCT-120-0300	300	75.0	93.7	99.9	125.0	1,110	9.3	\$599
RCT-120-0340	340	85.0	106.2	113.3	141.6	1,258	10.5	\$649
RCT-120-0375	375	93.7	117.1	124.9	156.2	1,388	11.6	\$689
RCT-120-0432	432	108.0	135.0	143.9	180.0	1,598	13.4	\$769

## 240 Volt TempZone™ Floor Heating Ruler Cables

SKU	Cable Length in Feet	Coverage in Sq. Ft.				WATTS	AMPS	MSRP
		3" Spacing	3.75" Spacing	4" Spacing (Recommended)	5" Spacing			
		GripStrips	Prodeso Membrane	GripStrips	Both Strips and Membrane			
RCT-240-0055	55	13.7	17.1	18.3	22.9	204	0.9	\$209
RCT-240-0065	65	16.2	20.3	21.6	27.0	241	1.1	\$229
RCT-240-0075	75	18.7	23.4	24.9	31.2	278	1.2	\$249
RCT-240-0095	95	23.7	29.6	31.6	39.5	352	1.5	\$299
RCT-240-0115	115	28.7	35.9	38.3	47.9	426	1.8	\$329
RCT-240-0155	155	38.7	48.4	51.6	64.5	574	2.4	\$409
RCT-240-0195	195	48.7	60.9	64.9	81.2	722	3.1	\$469
RCT-240-0235	235	58.7	73.4	78.3	97.9	870	3.7	\$529
RCT-240-0275	275	68.7	85.9	91.6	114.5	1,018	4.3	\$579
RCT-240-0315	315	78.7	98.4	104.9	131.2	1,166	4.9	\$619
RCT-240-0355	355	88.7	110.9	118.3	147.9	1,314	5.5	\$669
RCT-240-0395	395	98.7	123.4	131.6	164.5	1,462	6.1	\$719
RCT-240-0435	435	108.7	135.9	144.9	181.2	1,610	6.8	\$769
RCT-240-0515	515	128.7	160.9	171.6	214.6	1,906	8.0	\$859
RCT-240-0595	595	148.7	185.9	198.3	247.9	2,202	9.2	\$959
RCT-240-0675	675	168.7	210.9	224.9	281.2	2,498	10.5	\$1,069
RCT-240-0749	749	187.2	234.0	249.6	312.1	2,771	11.6	\$1,149
RCT-240-0864	864	216.0	270.0	287.9	360.0	3,197	13.4	\$1,259