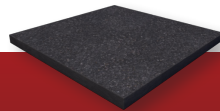
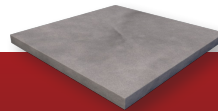


Snow Melt Mat

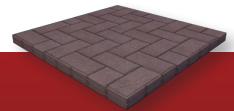
Designed for quick and easy installation, our snow melting mats are perfect for walkways, driveways and patios. The paving material absorbs heat and melts snow and ice, eliminating the need for, and expense of, plowing or deicing chemicals. The snow melting mats are available in 2' or 3' widths and a variety of different lengths. Because the mats consist of durable heating wire attached to a mesh at 3" spacing, the mats can be installed using the "cut-and-turn" method of installation, which is both fast and a great way to ensure even heating coverage. Snow melting mats are particularly useful for heating a square or rectangular project like a driveway or walkway.



Asphalt



Concrete



Pavers

Surface Types:

Product Information

Snow Melt Mat	Heating wire attached to an open cell (approx. 1" openings) mesh
Heating Element Color	Green
Heating Element Insulation	Fluoropolymer
Heating Cable Outer Insulation	PVC/Polyolefin
Heating Output	Up to 50 Watts per sq. ft.
Certifications	CSA Listed for use in Canadian and U.S. markets
Warranty	10-year limited warranty

Example Projects

	Driveway Full Coverage	Driveway Tire Tracks	Patio Full Coverage
Heated Area	10' x 20'	10' x 20'	26' x 10'
Product Cost	\$1,730.00 USD \$2,162.00 CAD	\$878.00 USD \$1,097.00 CAD	\$2,327.00 USD \$2,909.00 CAD
Hourly Cost*	\$1.25/hr USD \$1.50/hr CAD	25¢/hr USD 25¢/hr CAD	\$1.50/hr USD \$1.75/hr CAD

* Based on national average of 12¢ per kWh (USA) and 14¢ per kWh (Canada)

Dimensions

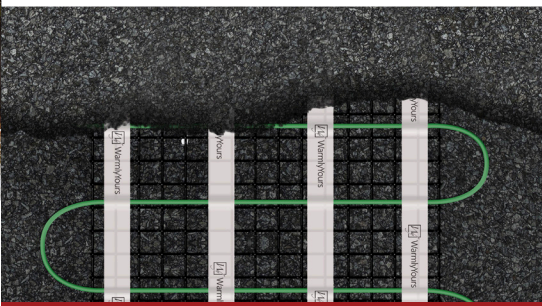
Sizes	Available in 2' and 3' wide rolls
Heating Element Thickness	5/16"
Cold Lead Information	<ul style="list-style-type: none"> Length 20' 14 AWG for rolls less than 12 Amps 12 AWG for rolls of 12 Amps and more
Factory Splice Max Size	9/16" in diameter, approx. 6" long

Electrical

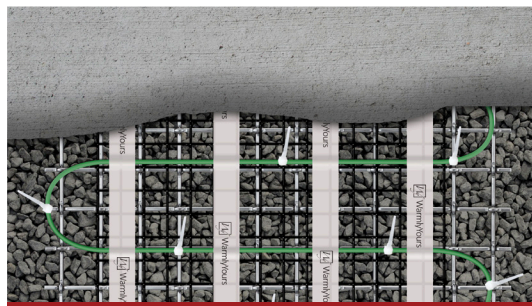
- Snow Melt Mats have no polarity.
- Snow Melt Mats must be installed on a GFEP (30mA) circuit.

Voltage	Available in 120V, 240V
Cold Lead Construction	2 core wires and ground conductor
Cold Lead Wire Colors	<p>120V: Yellow & black with green ground conductor</p> <p>240V: Red & black with green ground conductor</p>

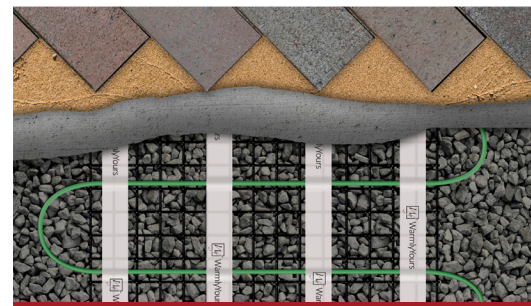
Cross Sections



Asphalt



Concrete



Pavers

Installation Information

- The 2 most common coverage options are full coverage and tire tracks heating. The tire tracks format is a cost effective alternative to full coverage that will keep a driveway usable even in substantial snowfall.
- The heating element should be installed within 2" to 3" from the top of the finished surface.
- Do not shorten the heating cable. Do NOT cut the heating cable. Only the non-heating cold leads can be shortened.
- Do not connect the heating cable to the power supply for testing before it is embedded (this could lead to dangerous overheating). Testing is only done with a digital ohmmeter and a megohmmeter.
- Do not fold or position the warming system so that the mesh overlaps itself or other warming cables (this could lead to dangerous overheating).
- Do not run a power lead or sensor wire across a warming cable.
- Make sure that the manufacturer's splice (which connects the heating cable and the cold lead) is completely embedded.

- There should be separate conduits for the heating element cold leads (adhere to the guidelines outlined in Appendix C in the NEC Handbook) and the low voltage temperature sensor extension wire.
- Cold lead connections or extensions must be done in an accessible junction box.
- At least 6" of free non-heating lead must be present in the junction box.
- All products must be installed in compliance with local Code.
- A snowmelt plaque is required by National Electric Code (NEC) to mark electrically heated surfaces.

How to Order

- 1 Simply draw a project sketch that includes dimensions, power source location, and the locations of any permanent fixtures like drains, grates, trees, etc.
- 2 Send it to sales@warmlyyours.com. Then WarmlyYours's skilled engineers will create a free SmartPlan™ custom installation plan based on your drawing, typically in as little as 1 business day.
- 3 After you receive your SmartPlan™, just verify the correct dimensions before placing your order with your WarmlyYours account manager.

